

# M2

## Installation Guide

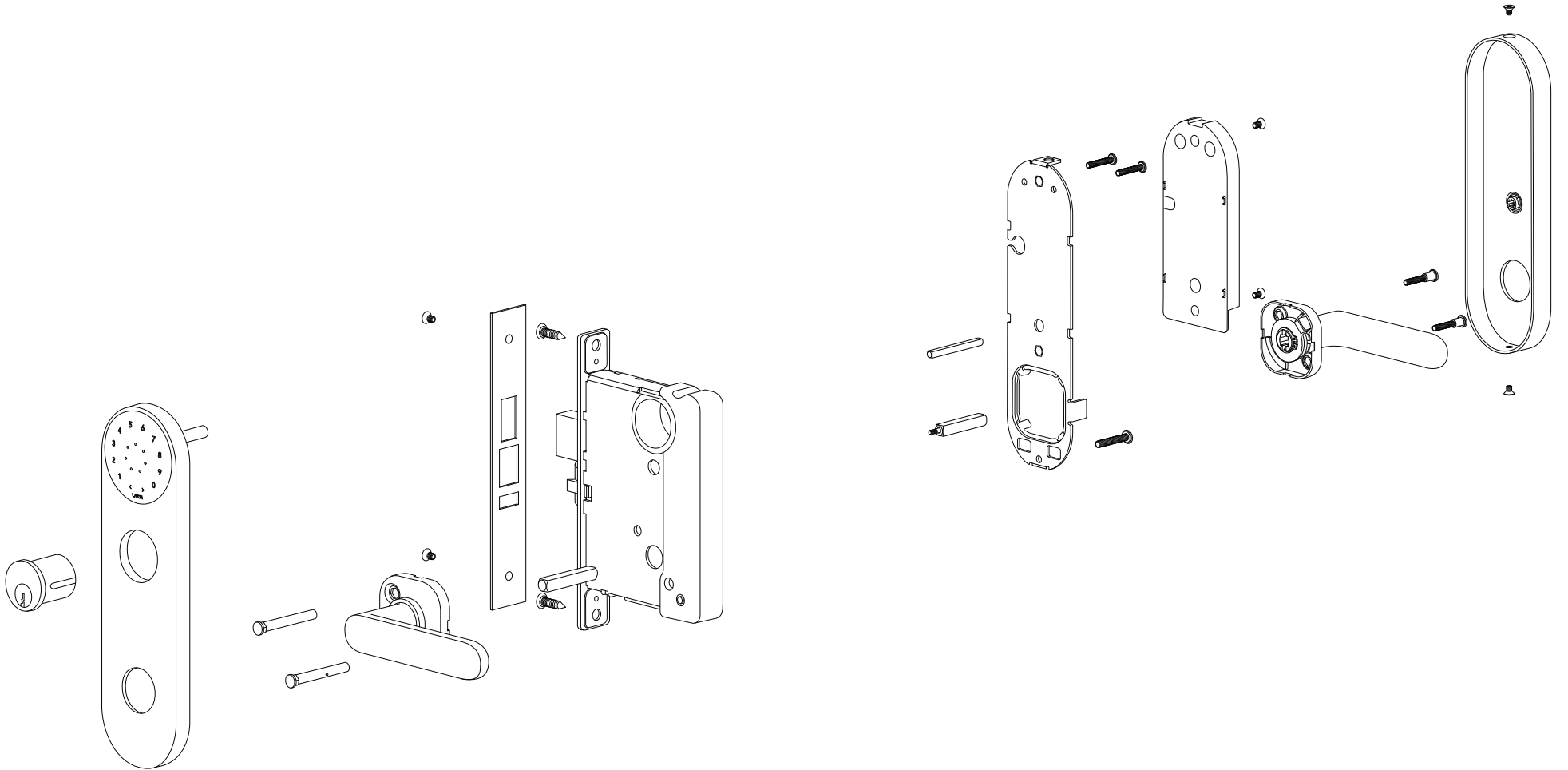
## Table of contents

Things you should know	<b>04</b>
Included in the box	<b>06</b>
Hardware	<b>08</b>
Preparation	<b>11</b>
Installation	<b>21</b>
Regulatory compliance	<b>38</b>

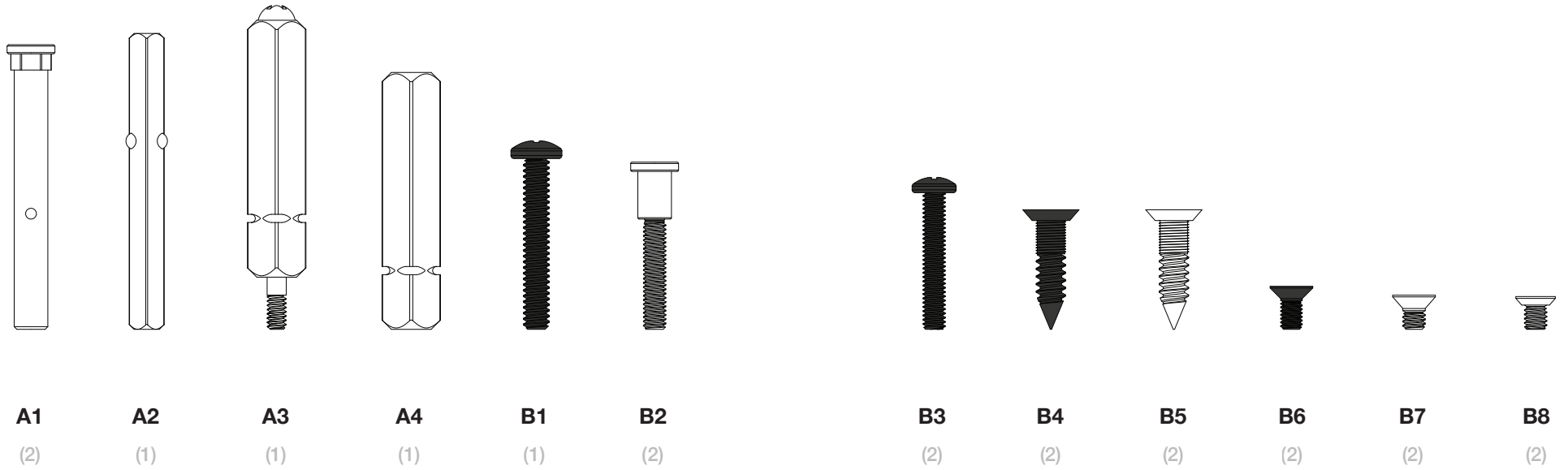
# Things you should know

- Doors should be properly specified and hung, and the strike should be prepped prior to installation. The door prep details can be found online at **support.latch.com**.
- The lens and battery tray should always be paired together. Avoid mixing the exterior and interior assemblies with other locks on the job site.
- If installing on an active construction site, it is recommended to add painter's tape around the exterior of the trim where it meets the door and to leave the protective film on the device. Do not leave the painter's tape applied for longer than recommended by the manufacturer.
- The product certifications depend on install in accordance with this guide.
- More resources, including the electronic version of this guide, can be found online at **support.latch.com**.

## Inside the box



# Hardware



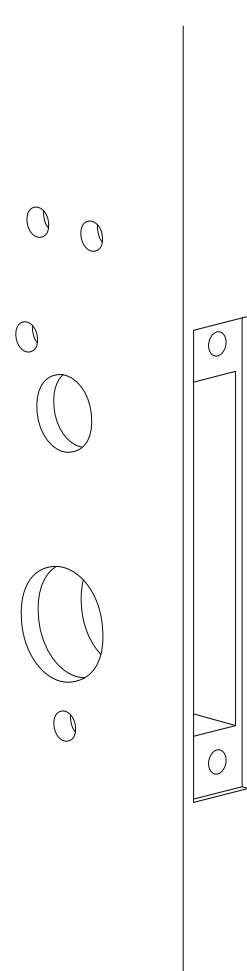
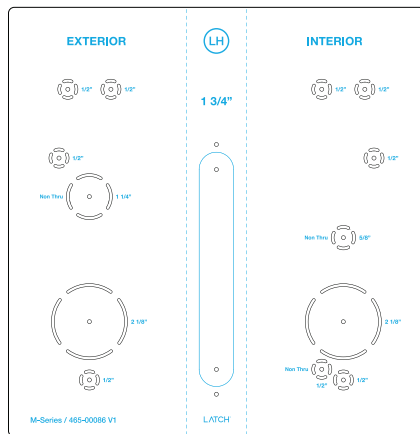
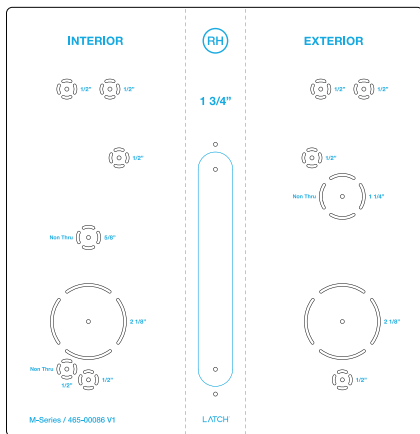
Please note: Do not use a drill for installation.

# Preparation

Here's how to prepare your door and device for the correct door thickness and device backset.

# Preparation

## Door

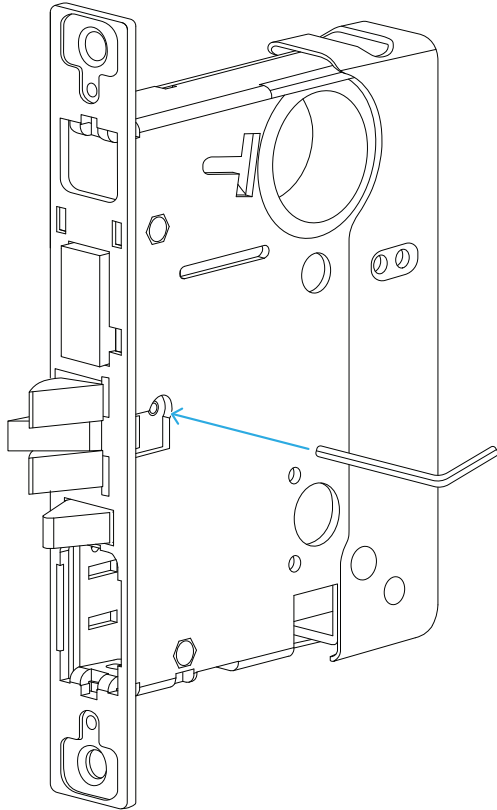


Select the cutsheet. The M2 only has one backset, and is only made for 1-3/4" (44.5mm) thick doors.

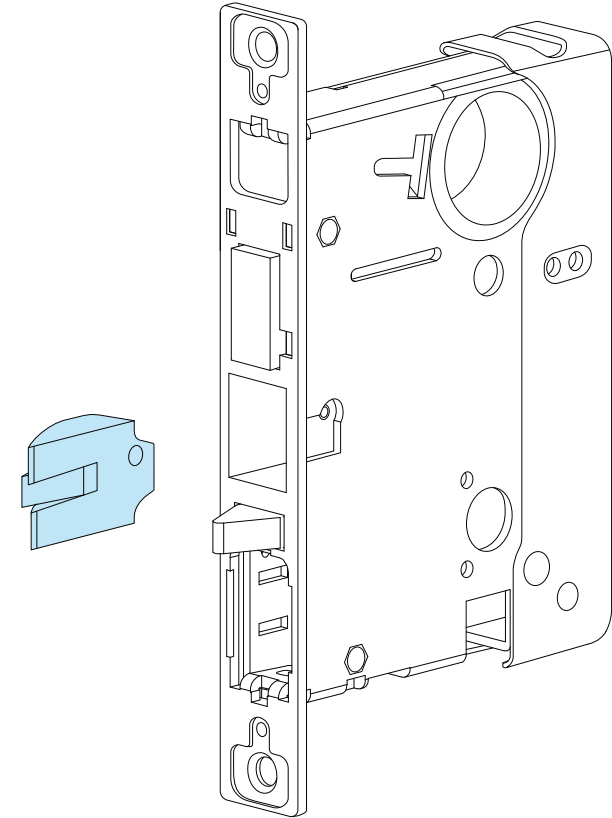
Note: Deburr all holes so that the moving parts of the lever set function properly and wires aren't damaged by sharp edges.

## Preparation

Handing/Swing



To change the latchbolt position remove the set screw with the Allen wrench.

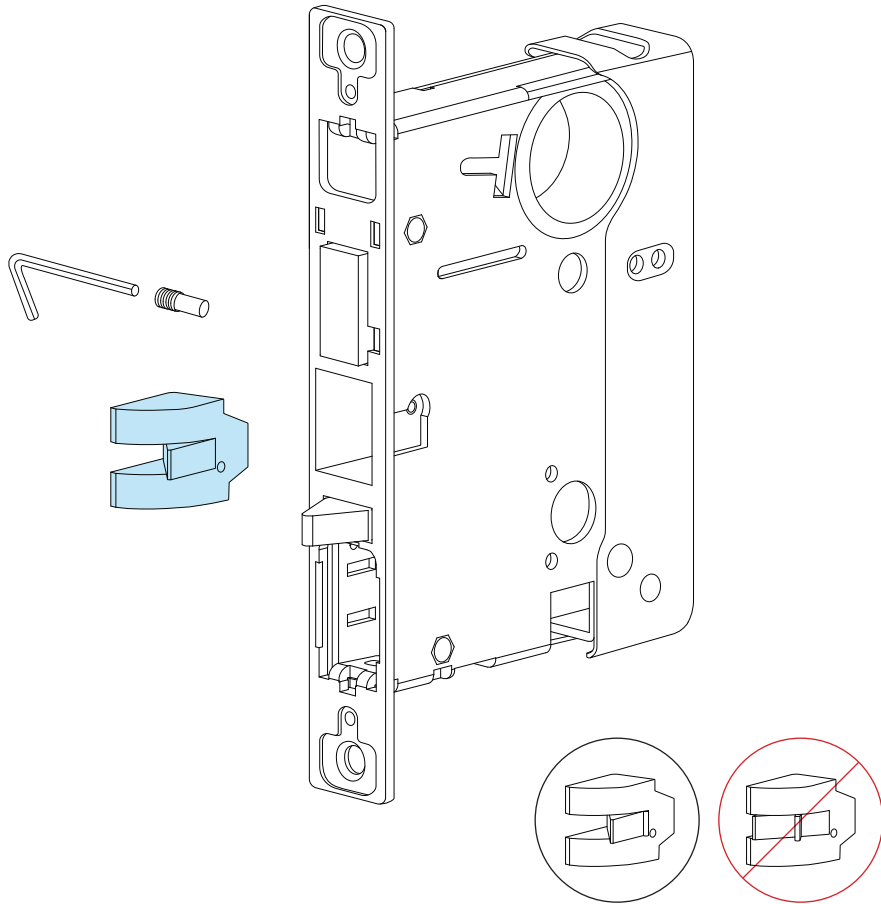


Pull the latchbolt out of the lock.

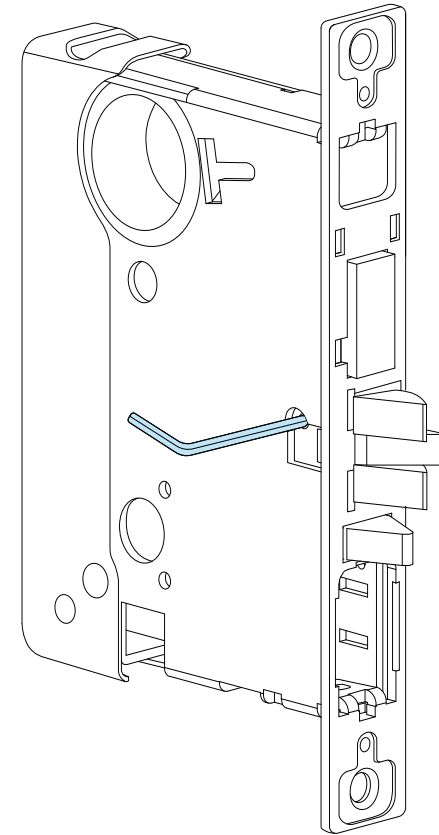


## Preparation

Handing/Swing



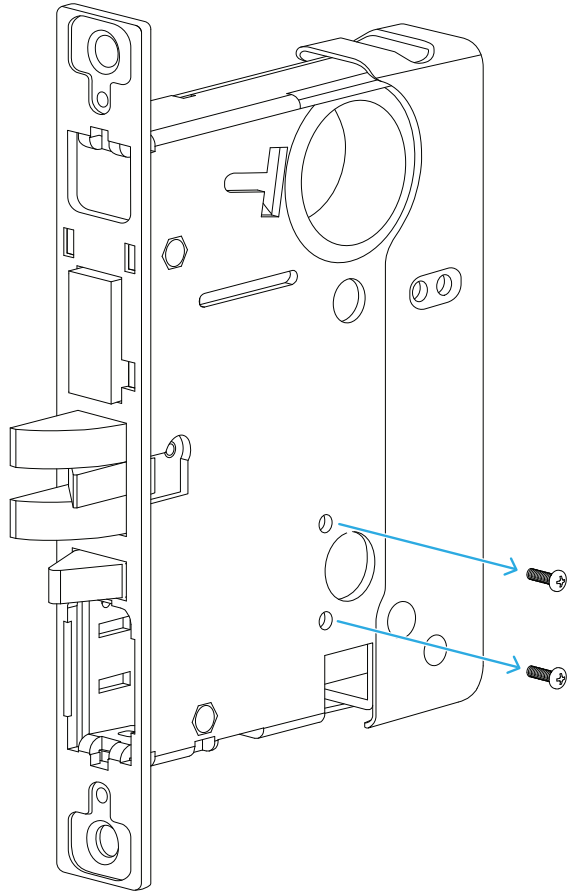
Rotate the latchbolt 180° and reinstall into the lock body. Push the latchbolt into the lock and then release.



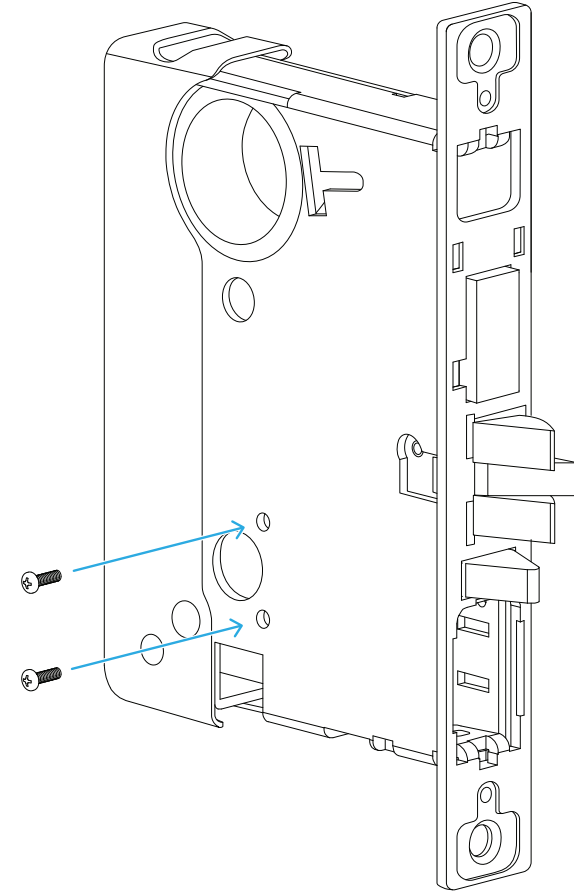
Reinstall the set screw from the opposite side and tighten securely with the Allen wrench.

## Preparation

### Setting Secure Side



To change the hub clutch locking side remove the two screws as shown above.

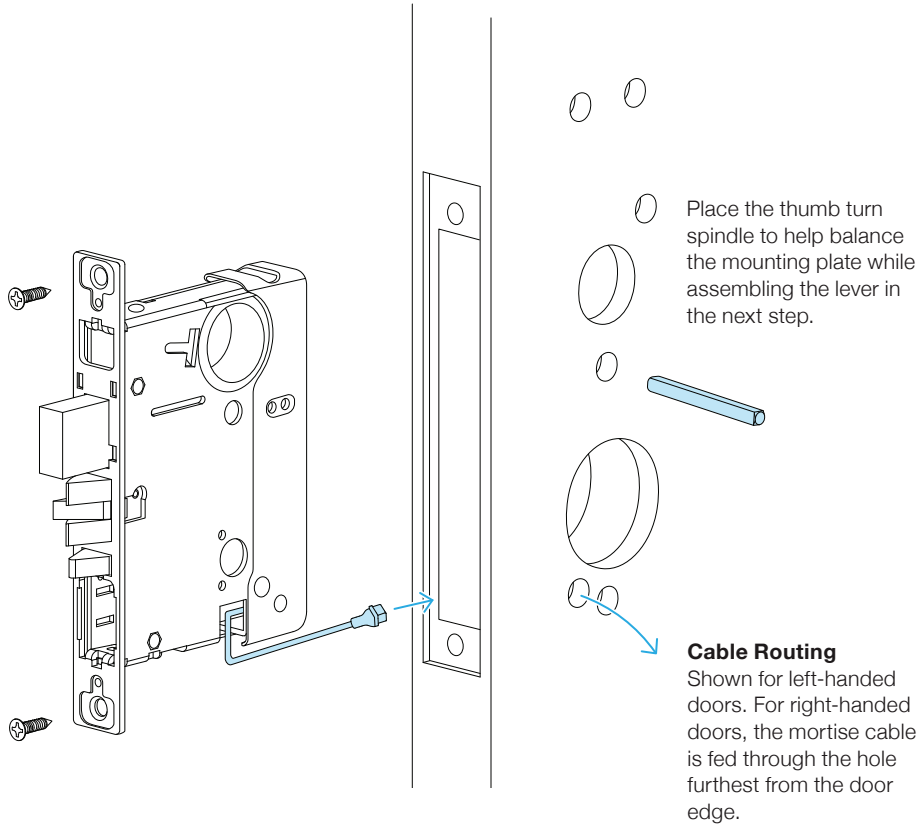


Reinstall the screws on the opposite side of the mortise lock body. **The screws should be on the interior (secure side) of the door.**

# Installation

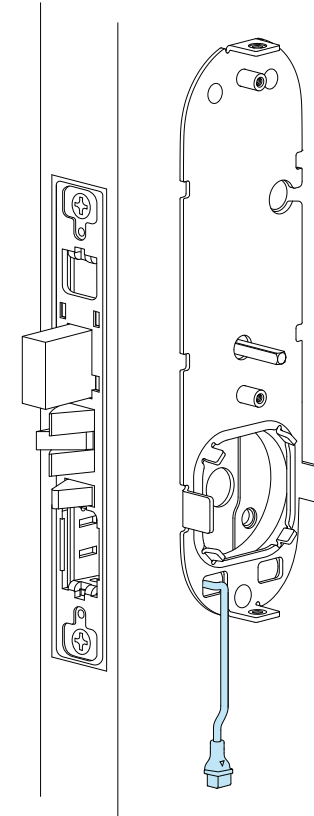
Once your door is prepped, proceed with installation.

# 1.



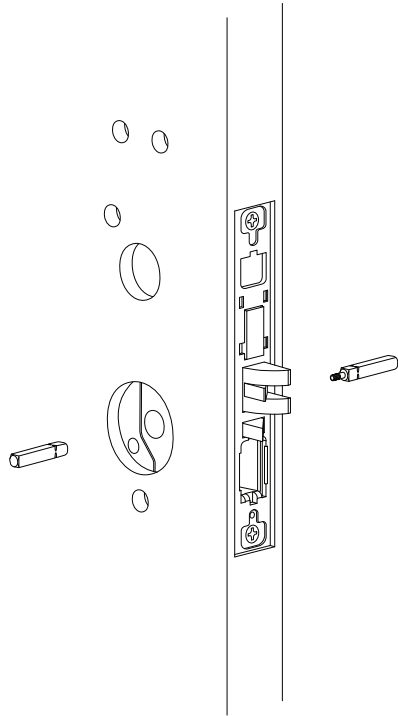
Install the mortise lock body as shown and secure with two screws (B5). Feed the cable through as shown. Avoid pinching or pulling on the cable. It is recommended to leave the mounting screws slightly loose until the cylinder is fully installed.

# 2.



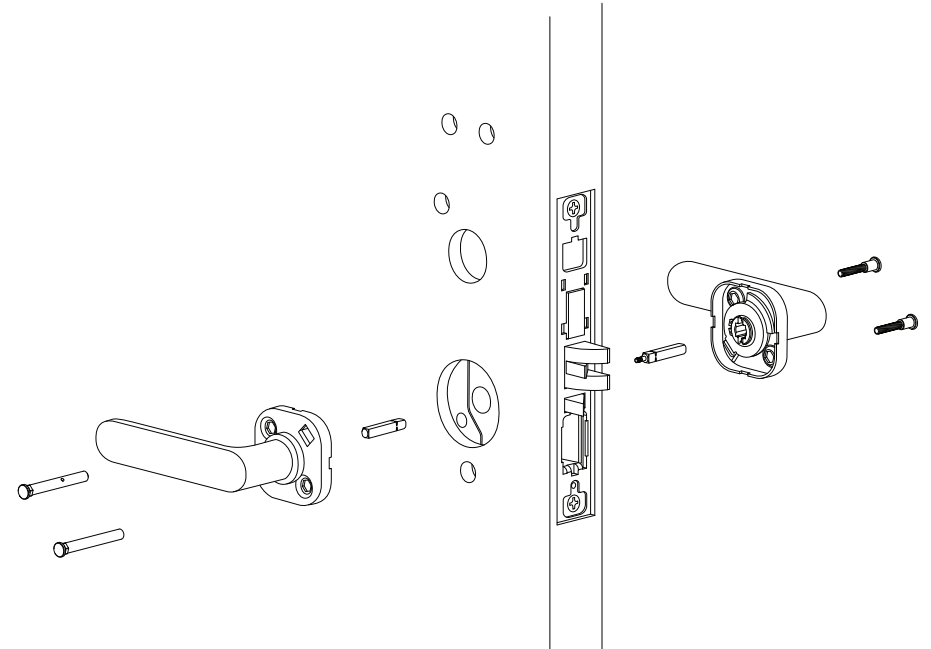
Separate the interior trim from the battery tray and mounting plate. Thread the mortise cable through the corresponding hole in the mounting plate, and balance the mounting plate on the thumb turn spindle.

# 3.



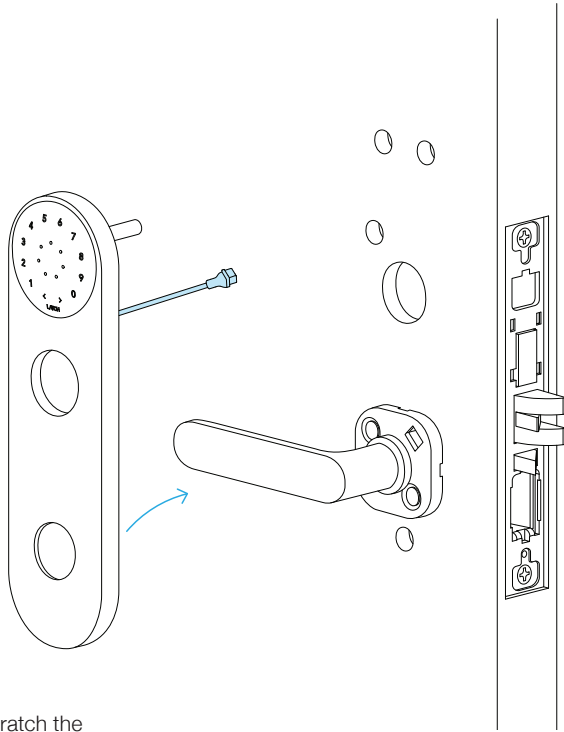
Put the exterior (A4) & interior (screw side - A3) lever spindles in the lever hub and hand tighten the screws. Note: The spindle screw should be on the interior.

# 4.



Add the levers. Then, put the posts through the lever bracket holes and connect the lever screws through the lever bracket holes. Note that the screws should be on the interior side.

# 5.

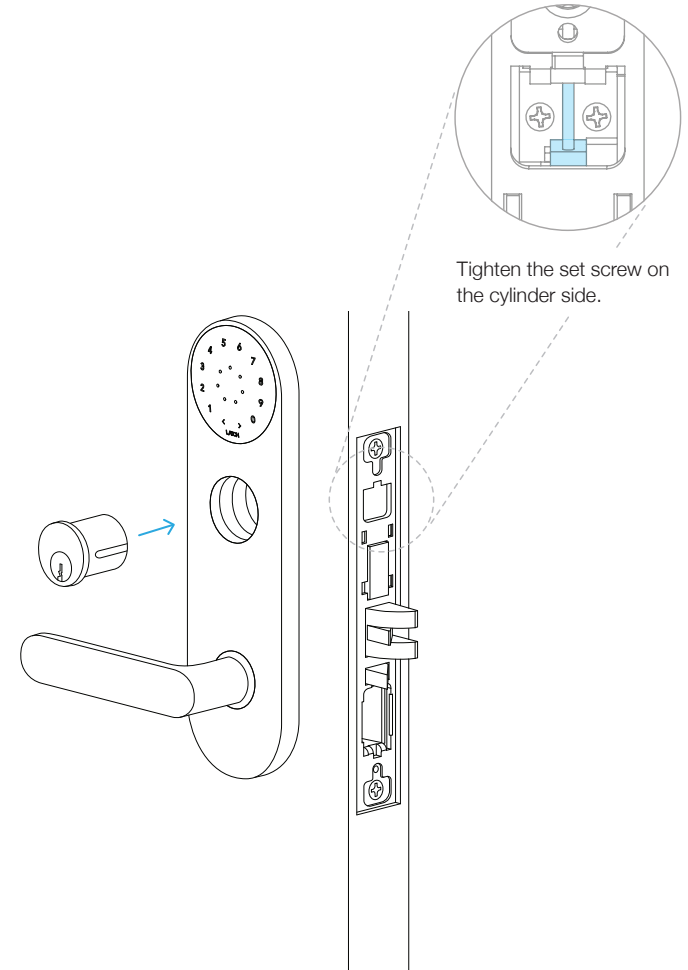


**Note:**

Take care not to scratch the lever when guiding through the trim during this step.

Guide outer trim onto the lever. Do not screw down the trim until after installing the cylinder in the next step. Feed the cable all the way through the door hole. **Avoid pinching the cable.**

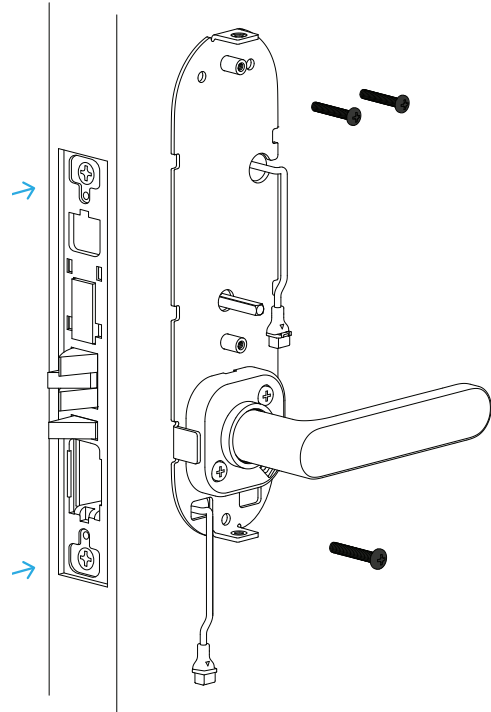
# 6.



Tighten the set screw on the cylinder side.

Screw the cylinder into the mortise lock body. Stop and re-adjust the cylinder if there is pushback. Be sure to tighten cylinder with the key inserted halfway, not with a screwdriver. Once the cylinder is flush with the lock, tighten the set screw as shown above.

# 7.

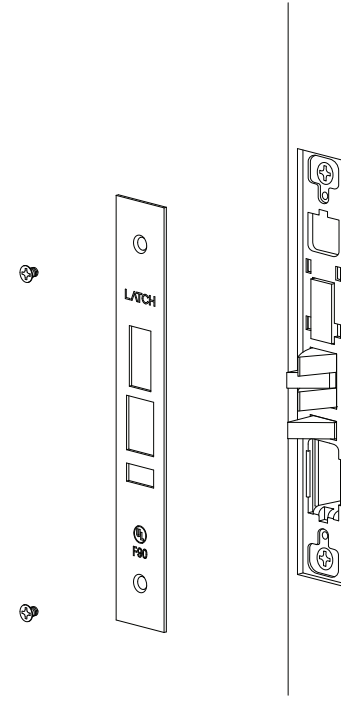


**Note:**

Be sure to not overtighten the mounting plate screws.

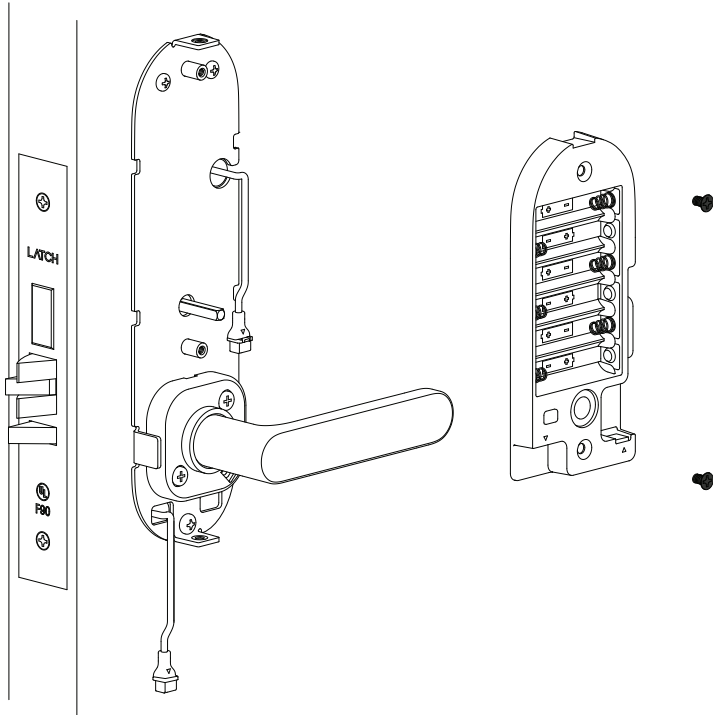
Tighten the side screws in the mortise to secure the cylinder. Then secure the interior mounting plate with three mounting screws (B1 & B3). Route the wire as shown.

# 8.



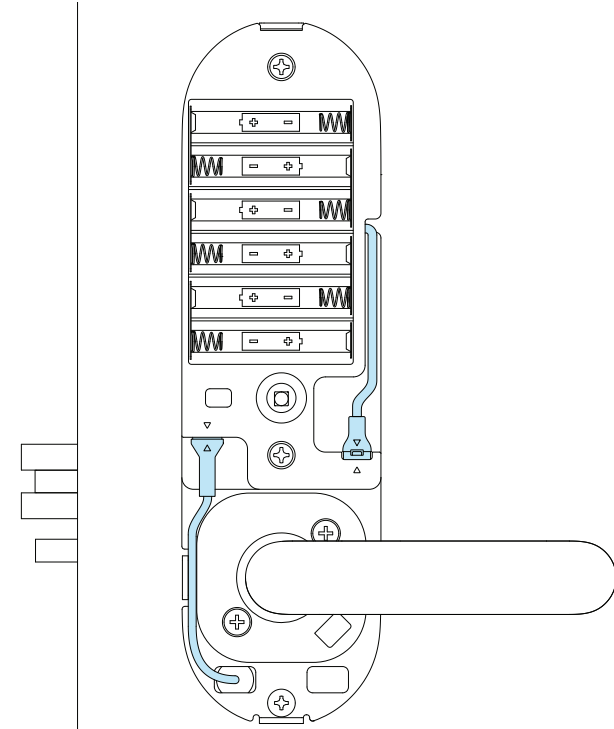
Secure the faceplate to the mortise lock body with the two finished faceplate screws (B8).

# 9.



Line up the battery tray to the mounting plate, secure with the two battery tray mounting screws (B6). **Avoid pinching the cables between the battery tray and the mounting plate.**

# 10.



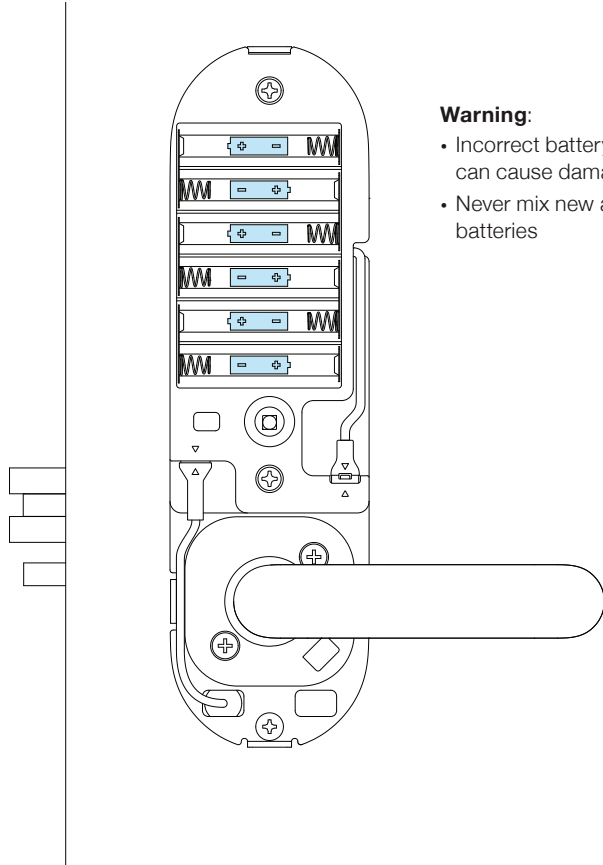
**Note:**

The top cable has a clasp and you will hear it click in place, whereas the bottom cable needs to be pushed in all the way and you will not hear a click.

Click the two connectors into place, and route the cables as shown.



# 11.

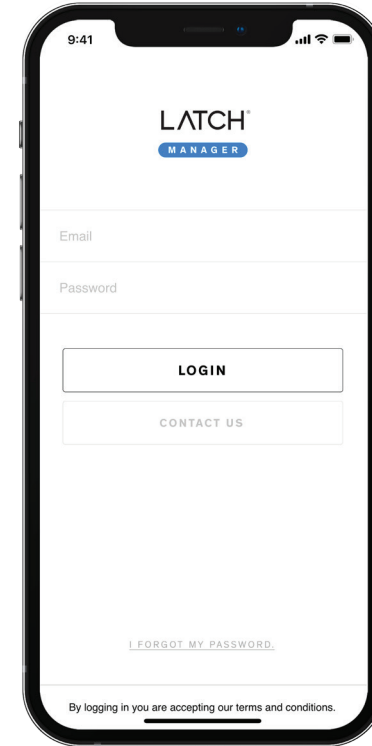


**Warning:**

- Incorrect battery orientation can cause damage.
- Never mix new and old batteries

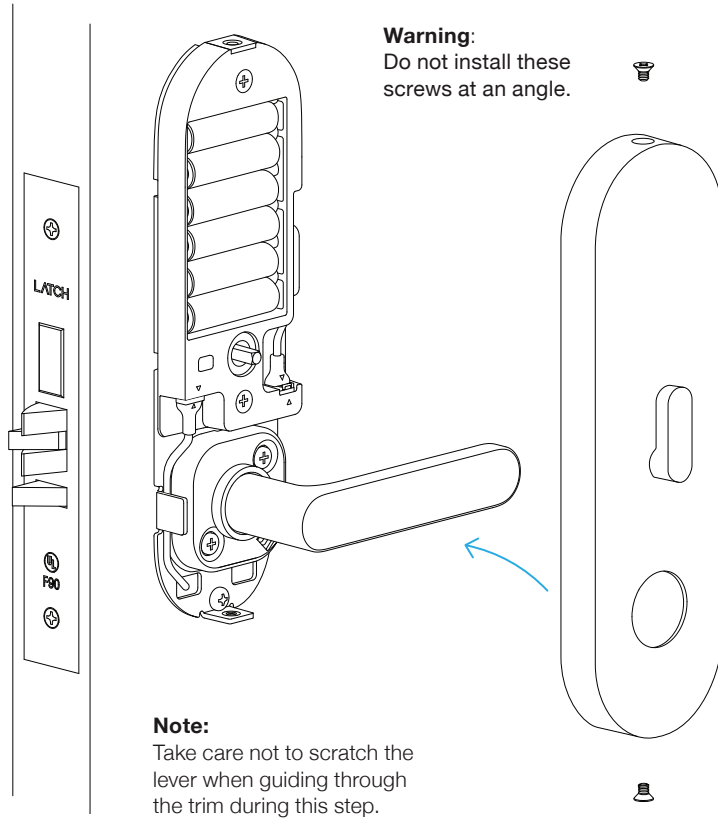
Load six AA non-rechargeable alkaline batteries.

# 12.



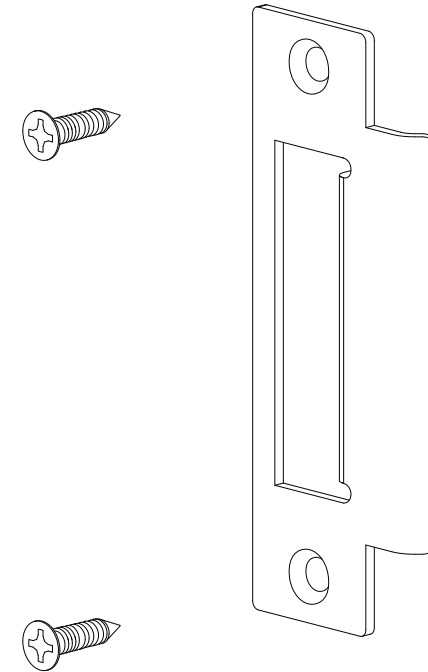
Download the Latch Manager App and configure.

# 13.



Guide the inner trim over the lever. Use the two mounting screws to secure the inner trim (B7). **The thumbturn should be pointed up when the bolt is retracted. Check lock for correct operation before closing the door.**

# 14.



Install the strike plate on the frame side of the door with the dust box as specified in your installation.

# 15.

## Test the lock

**Cylinder test:** Insert key & rotate one direction to retract the latch bolt, then the other direction to throw the deadbolt. Ensure smooth operation. You may need to adjust the depth of the cylinder.

**App unlock:** When complete, be sure to test an unlock from the app to verify correct installation before locking the door or leaving the installation.

## FCC Compliance Statement

### A) Federal Communications Commission Statement

This device complies with FCC Rules Part 15. Operation is subject to the following two conditions:

- This device may not cause harmful interference.
- This device must accept any interference received, including interference that may cause undesired operation.

(B) This equipment has been tested and found to comply with the limits for a class B digital device, pursuant to Part 15 of the Federal Communications Commission (FCC) rules. These limits are designed to provide reasonable protection against harmful interference in a residential installation. This equipment generates, uses, and can radiate radio frequency energy and, if not installed and used in accordance with the instructions, may cause harmful interference to radio communications. However, there is no guarantee that interference will not occur in a particular installation. If this equipment causes harmful interference to radio or television reception, which can be determined by turning the equipment off and on, the user is encouraged to try to correct the interference by doing one or more of the following measures:

- Reorient or relocate the receiving antenna.
- Increase the separation between the equipment and receiver.
- Connect the equipment into an outlet on a circuit different from that to which the receiver is connected.
- Consult the dealer or an experienced radio/TV technician for help

### (C) Radiation Exposure Statement:

This equipment must be installed and operated in accordance with provided instructions and the antenna(s) used for this transmitter must be installed to provide a separation distance of at least 20 cm from all persons and must not be co-located or operating in conjunction with any other antenna or transmitter.

## Industry Canada Statement

### (A) Radio Frequency (RF) Exposure Information

The radiated output power of the Wireless Device is below the Industry Canada (IC) radio frequency exposure limits. The Wireless Device should be used in such a manner such that the potential for human contact during normal operation is minimized. This device has been evaluated for and shown compliant with the IC Specific Absorption Rate ("SAR") limits when installed in specific host products operated in portable exposure conditions.

Canada's REL (Radio Equipment List) can be found at the following web address: <http://www.ic.gc.ca/app/sitt/reltel/srch/nwRdSrch.do?lang=eng>

Additional Canadian information on RF exposure also can be found at the following web address: <http://www.ic.gc.ca/eic/site/smt-gst.nsf/eng/sf08792.html>

### (B) Canada, avis d'Industrie Canada (IC)

Cet appareil numérique de classe B est conforme aux normes canadiennes ICES-003 et RSS-247. Son fonctionnement est soumis aux deux conditions suivantes: (1) cet appareil ne doit pas causer d'interférence et (2) cet appareil doit accepter toute interférence, notamment les interférences qui peuvent affecter son fonctionnement. L'identifiant Informations concernant l'exposition aux fréquences radio (RF) La puissance de sortie émise par cet appareil sans fil est inférieure à la limite d'exposition aux fréquences radio d' Industrie Canada (IC). Utilisez l'appareil sans fil de façon à minimiser les contacts humains lors du fonctionnement normal. Ce périphérique a été évalué et démontré conforme aux limites SAR (Specific Absorption Rate – Taux d'absorption spécifique) d' IC lorsqu'il est installé dans des produits hôtes particuliers qui fonctionnent dans des conditions d'exposition à des appareils portables. Ce périphérique est homologué pour l'utilisation au Canada.

Pour consulter l'entrée correspondant à l'appareil dans la liste d'équipement radio (REL - Radio Equipment List) d'Industrie Canada rendezvous sur: <http://www.ic.gc.ca/app/sitt/reltel/srch/nwRdSrch.do?lang=eng>

Pour des informations supplémentaires concernant l'exposition aux RF au Canada rendez-vous sur: <http://www.ic.gc.ca/eic/site/smt-gst.nsf/eng/sf08792.html>

LATCH®